

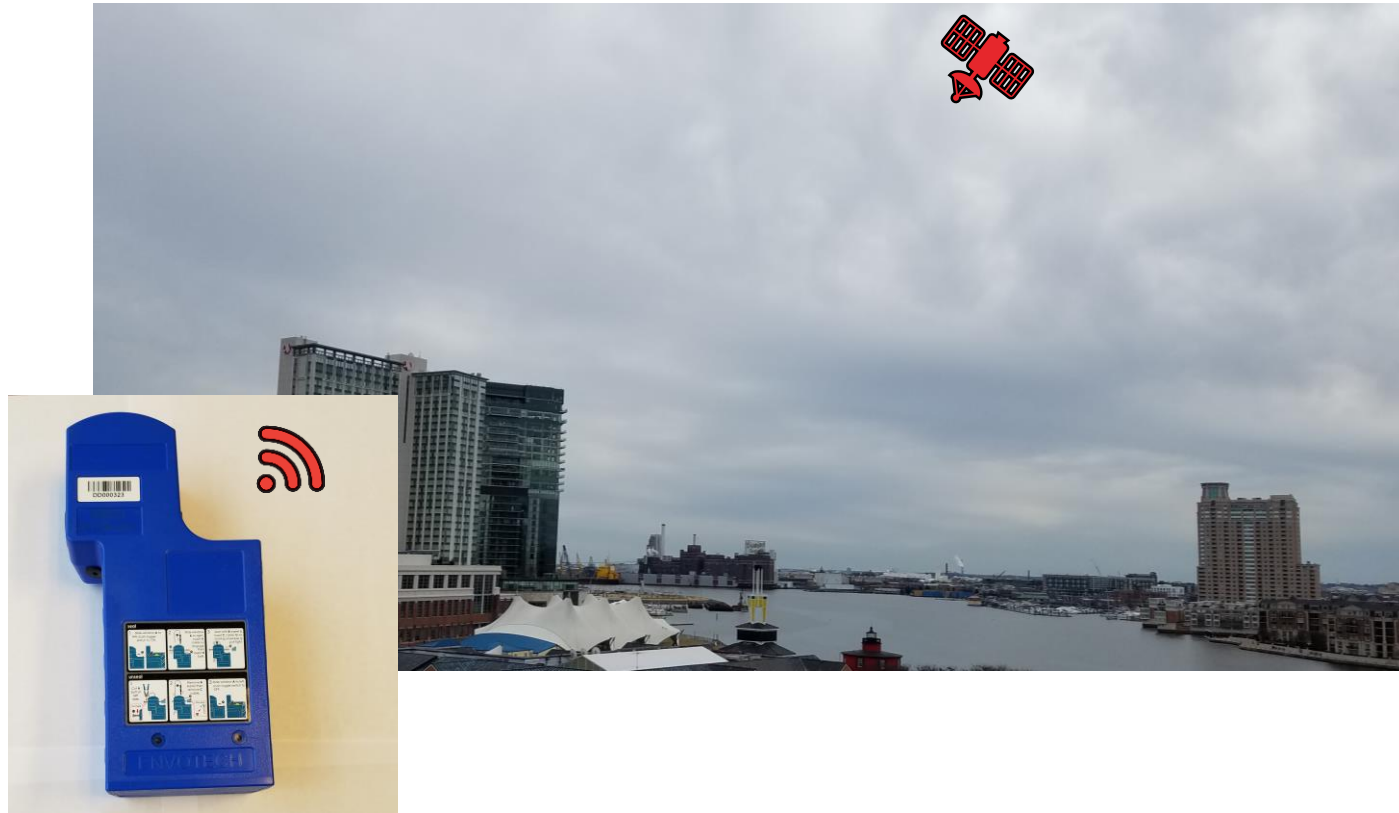
AKUA

SLM 3G4C-3.5
Device Sealing

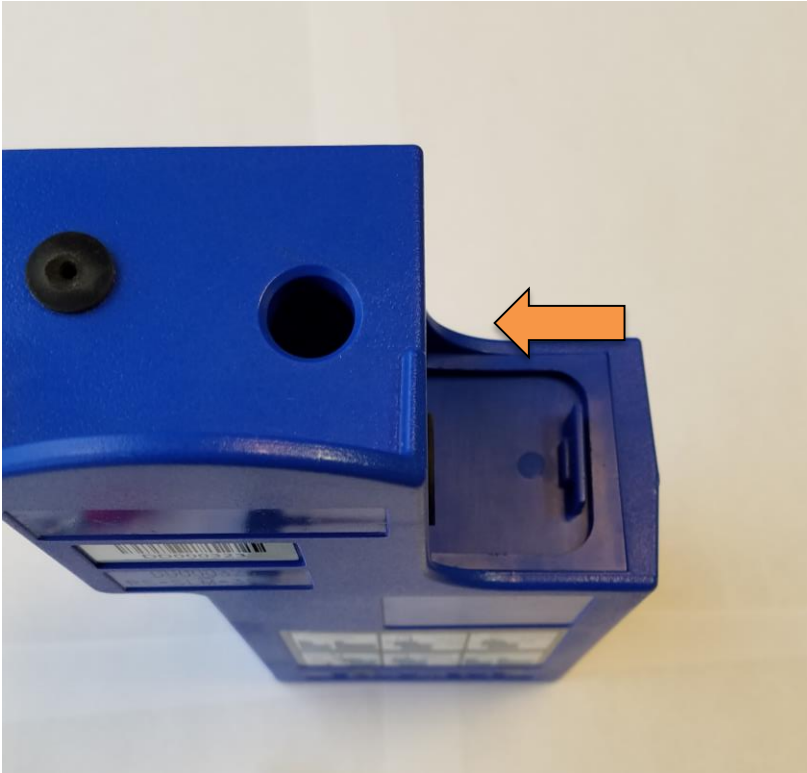
February 23, 2018



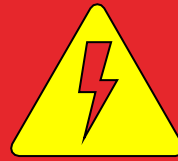
Set device outside with clear sky view



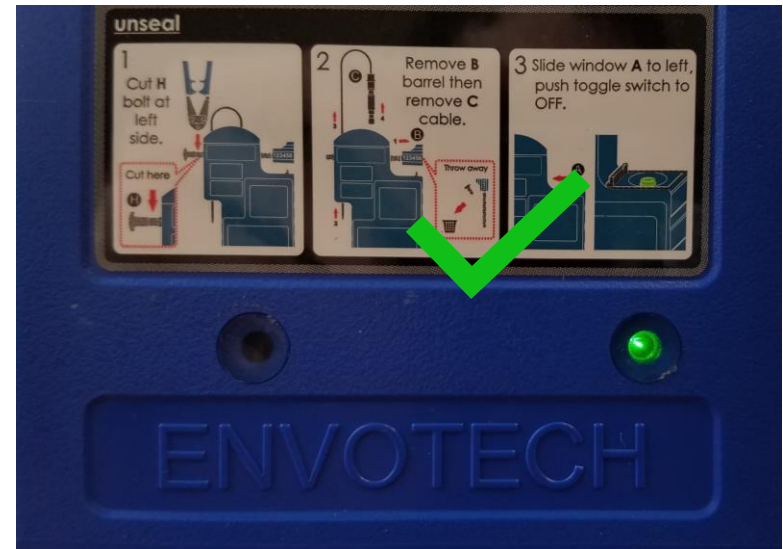
Open top sliding panel



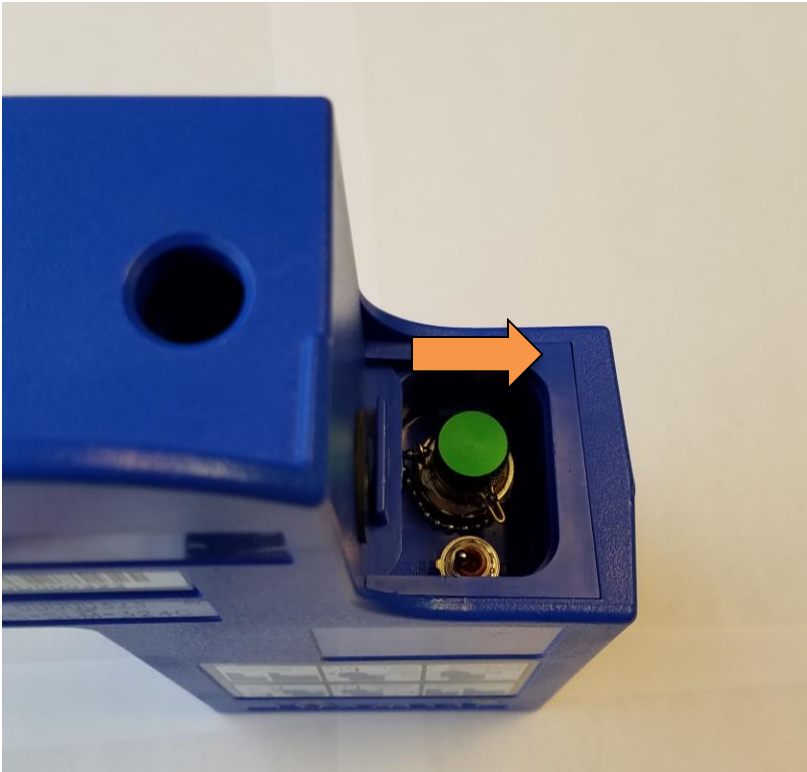
Flip power switch to “ON”



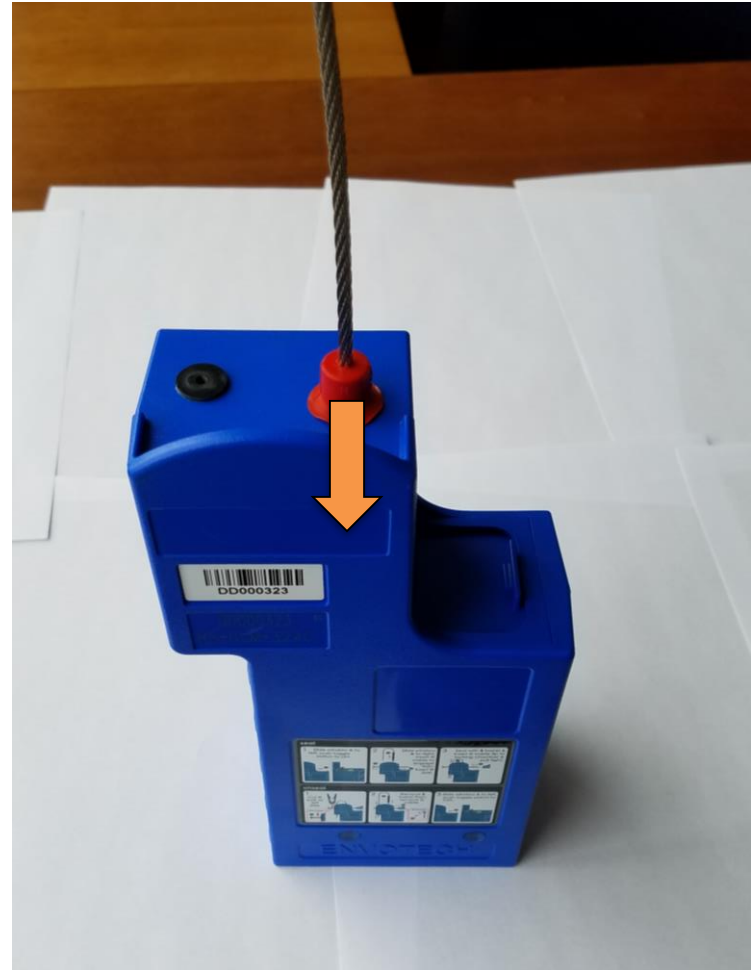
Wait for device to obtain signal – LED Display **Green**



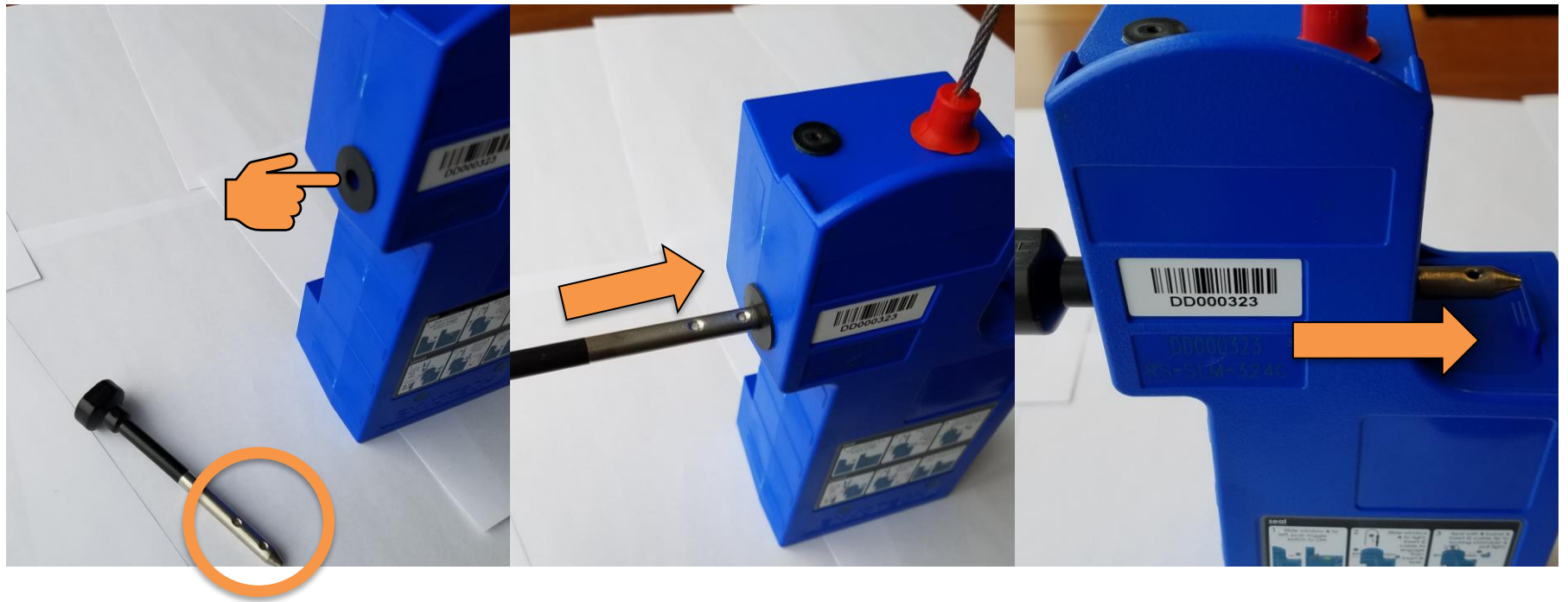
Close top panel



Insert bolt cable



Insert Customs H-Bolt



Insert Security Seal



Loop bolt cable onto container – Pull through



Final Example





AKUA
SECURE LOGISTICS