



ETA Status ?



Security Status ?



Sensor Status ?

2

Planned ?

7

Active ?

17

Complete ?

✖ Sensor Data Trip

⌚ ETA 🔒 Security 📍 Locate

Locust Point Rail Yard to Laghouat Farms

Consignee: Laghouat Farms BoL: BL98456821 Booking Reference: 167459

✖ DD000325_cmd501 (1,14) battery test

🔒 Security 📍 Locate

Asset tracking

✔ DD000382_CMD501 (1,8) battery test

🔒 Security 📶 Sensors 📍 Locate

Asset tracking

✔ DHS_2

⌚ ETA 🔒 Security 📍 Locate

Akua Offices to AKUA Offices

Consignee: Manufacturer BoL: B10199 Booking Reference: 564533

✔ Multi device PoD/Arrival 2

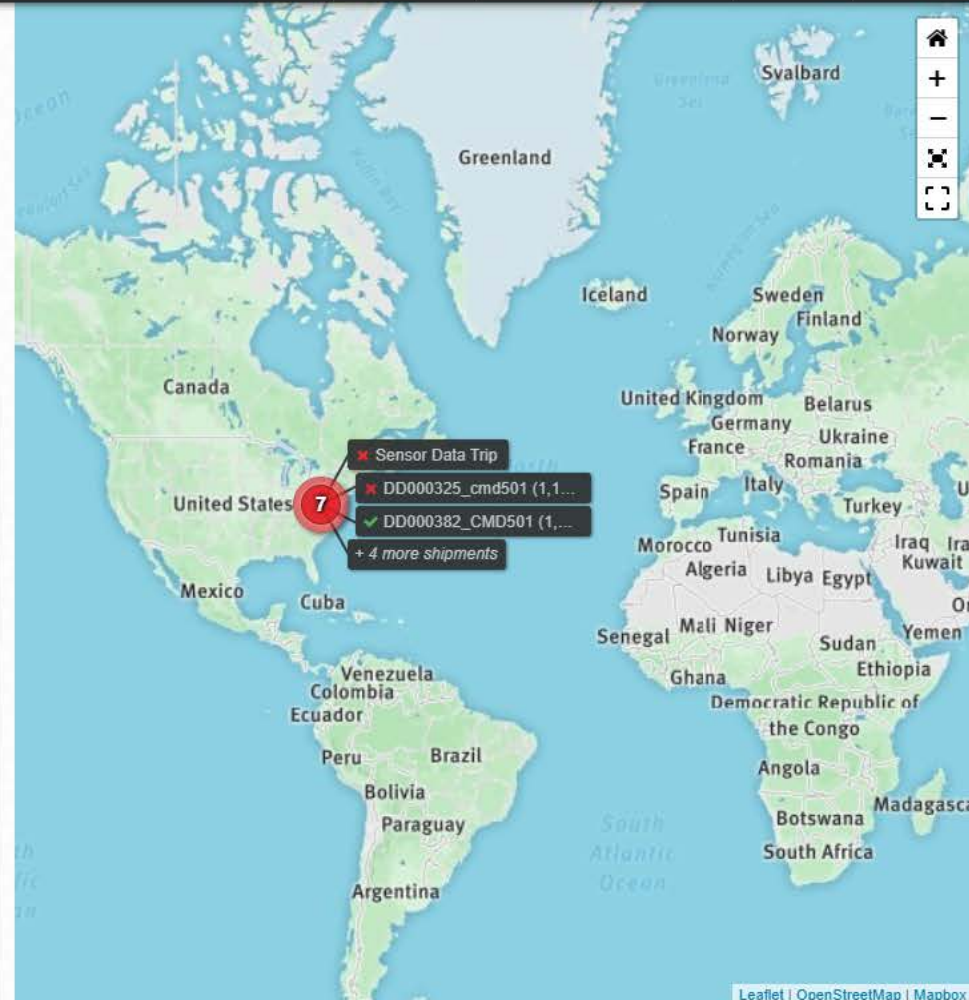
⌚ ETA 🔒 Security 📍 Locate

Akua Offices to AKUA Offices

✔ DD000372_20180718

🔒 Security 📍 Locate

Asset tracking



Dashboard

Aggregate Shipment Status

Status Color Key:

Green: Secure/On-Time

Yellow: Small Delay

Red: Breached/Delayed

Click to view all Shipments

The screenshot displays the AKUA dashboard interface. At the top left is the AKUA logo. The main navigation bar includes 'Valmont Middle East (VME)', 'Dashboard', 'Reports', 'Shipments', 'Settings', and 'Profile'. The dashboard features two summary cards: '100% On-Time' for ETA Status and '100% Secure' for Security Status. Below these are three cards showing counts: '0 Planned', '18 Active', and '0 Complete'. A red oval highlights the '100% On-Time' and '100% Secure' cards. A list of the six most recent shipments is shown below, each with a green checkmark, a tracking ID, and a status of 'ETA Security Locate'. The shipments are: UETU555338, CAIU7411432, APHU7351132, TCNU8563979, SEGU4978862, and TRLU7433632. A map on the right shows the region with a green circle and the number '18' indicating the total number of shipments, with a tooltip listing the top three tracking IDs and '+ 15 more shipments'. The AKU logo is visible in the bottom left corner.

Tracking ID	Status	ETA	Security	Locate
UETU555338	Secure/On-Time	ETA	Security	Locate
CAIU7411432	Secure/On-Time	ETA	Security	Locate
APHU7351132	Secure/On-Time	ETA	Security	Locate
TCNU8563979	Secure/On-Time	ETA	Security	Locate
SEGU4978862	Secure/On-Time	ETA	Security	Locate
TRLU7433632	Secure/On-Time	ETA	Security	Locate

List of 6 most recent shipments



[See full detailed list](#) | [Refresh](#)

Shipments Tab

Click individual Shipment Name to see detail.

Sort button:

Click to Zoom on Shipments

The screenshot displays the KUA (Korur Shipping) interface for the Shipments Tab. At the top, there is a navigation bar with the KUA logo and a search filter for "Consignee" set to "Any Consignee". Below this, there are tabs for "Planned", "Active", and "Complete", and a grid of status icons for Overall, ETA, Security, and Sensor. The main content area is split into two panels: a list of shipments on the left and a map on the right. The shipment list includes columns for status (green checkmarks), shipment ID, description, and carrier (CMA CGM). The map shows the Middle East region with a red pin on Mecca (TGLU7429628) and a cluster of 17 shipments near Dubai, with a tooltip showing details for TLLU4954765, CRTU0901328, and TCNU3629923. A large red arrow points from the text "Click to Zoom on Shipments" to the map area.

Status	Shipment ID	Description	Carrier
Active	UETU5558338	Port of Jebel Ali, UAE to Port of Abidjan, Côte d'Ivoire, Active	CMA CGM
Active	CAIU7411432	Port of Jebel Ali, UAE to Port of Abidjan, Côte d'Ivoire, Active	CMA CGM
Active	APHU7351132	Port of Jebel Ali, UAE to Port of Abidjan, Côte d'Ivoire, Active	CMA CGM
Active	TCNU8563979	Port of Jebel Ali, UAE to Port of Abidjan, Côte d'Ivoire, Active	CMA CGM
Active	SEGU4978862	Port of Jebel Ali, UAE to Port of Abidjan, Côte d'Ivoire, Active	CMA CGM
Active	TRLU7433632	Port of Jebel Ali, UAE to Port of Abidjan, Côte d'Ivoire, Active	CMA CGM
Active	TCNU6165425	Port of Jebel Ali, UAE to Port of Abidjan, Côte d'Ivoire, Active	CMA CGM
Active	CMAU4987514	Port of Jebel Ali, UAE to Port of Abidjan, Côte d'Ivoire, Active	CMA CGM
Active	TLLU4954765	Port of Jebel Ali, UAE to Port of Abidjan, Côte d'Ivoire, Active	CMA CGM
Active	TCNU3629923	Port of Jebel Ali, UAE to Port of Abidjan, Côte d'Ivoire, Active	CMA CGM

List of all shipments



Shipment Detail

Shipment Details (can include Bill of Lading, Booking Number, On-Dock Address, Consignee, and more)

Click for Map Layer Options

Current Location Information

Map Controls

AKUA

✓ **TCLU7429628** ETA Security

Port of Jebel Ali, UAE to Port of Abidjan, Côte d'Ivoire, Active
Carrier: CMA CGM
Shipment Start: May 24th, 2018 07:23:00 GMT

Route Cargo Status Path Alerts Files Sensor Data

Expand All Routes | Collapse All Routes

Port of Jebel Ali, UAE May 28th, 2018 17:14:00 GMT **Port of Tanger Med, Morocco** ETA Jun 20th, 2018 18:00:00 GMT

Conveyance Vessel via **Express Rome**

Departure Times **Arrival Times**

Original ETD: May 28th, 2018 17:30:00 GMT
AKUA ETD: May 28th, 2018 17:30:00 GMT
Departed: May 28th, 2018 17:14:00 GMT
Actual Delay: **On-time**

Original ETA: Jun 20th, 2018 18:00:00 GMT
AKUA ETA: Jun 20th, 2018 18:00:00 GMT
Estimated Delay: **On-time**

Port of Tanger Med, Morocco ETA Jun 24th, 2018 06:00:00 GMT **Port of Abidjan, Côte d'Ivoire** ETA Jul 7th, 2018 06:00:00 GMT

Conveyance Vessel via **CMA CGM Sambhar**

Departure Times **Arrival Times**

Original ETD: Jun 24th, 2018 06:00:00 GMT
AKUA ETD: Jun 24th, 2018 06:00:00 GMT
Estimated Delay: **On-time**

Original ETA: Jul 7th, 2018 06:00:00 GMT
AKUA ETA: Jul 7th, 2018 06:00:00 GMT
Estimated Delay: **On-time**

Valmont Middle East (E) Dashboard Reports Shipments Settings file

Al Balad

Al Qaryat

Al M

✓ **TCLU7429628**
ETA Security
Loading geocode: 21.45349, 39.15827
Reported: Jun 12th, 2018 07:06:00 GMT

Leaflet | OpenStreetMap | Mapbox

Route Information & ETA's



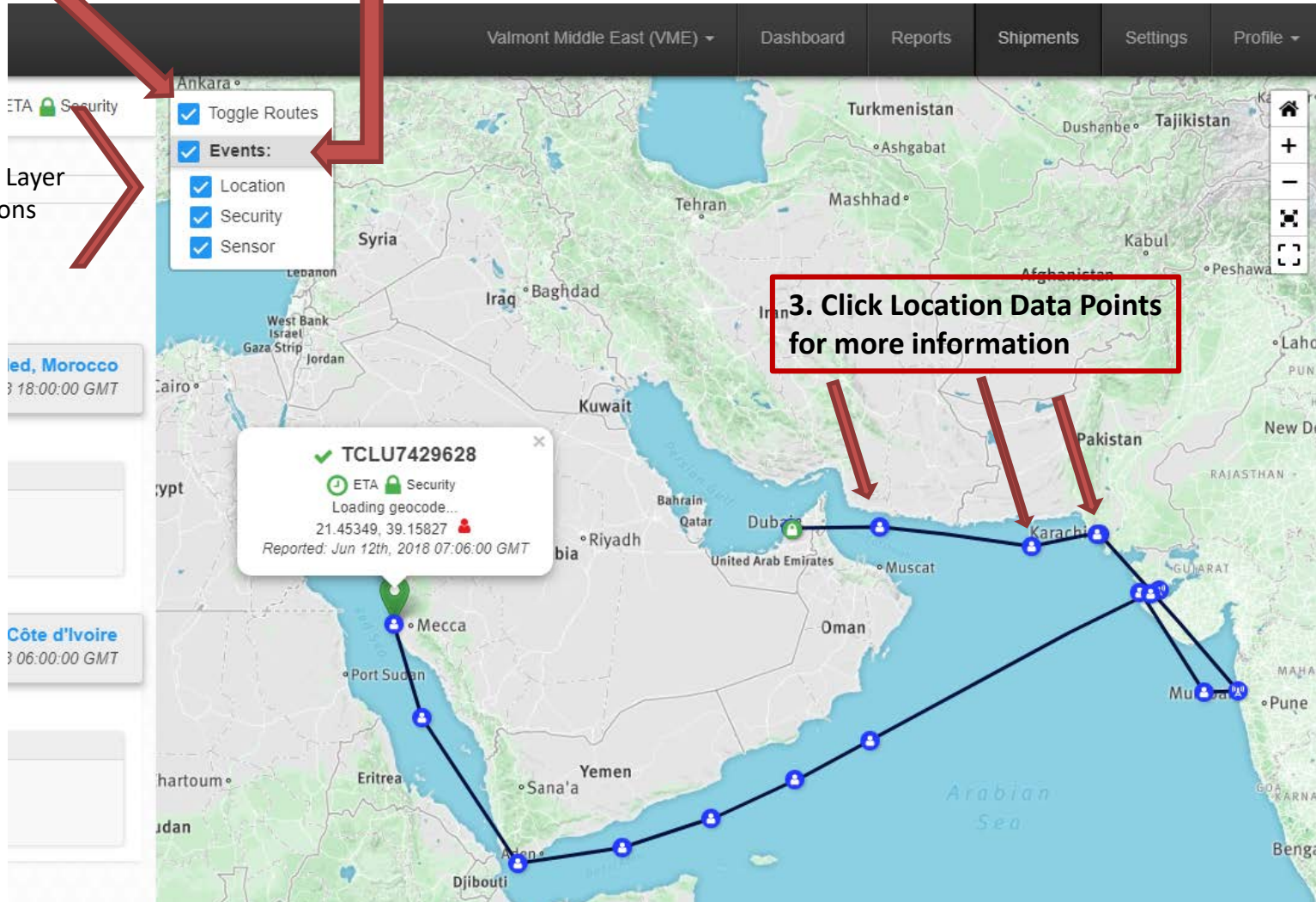
Maps

1. Click "Toggle Routes"

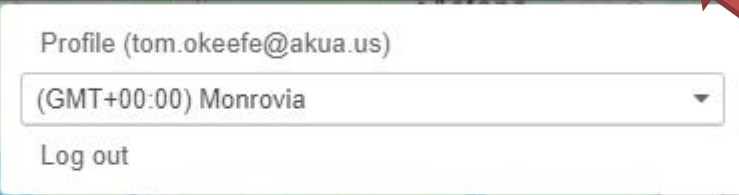
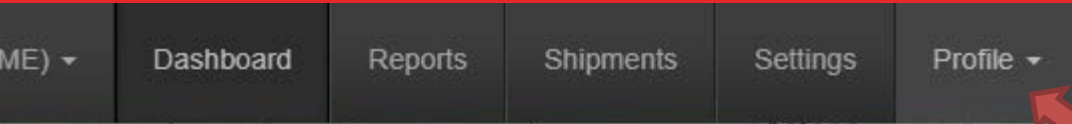
2. Click "Events" to select all or select "Location", "Security", and/or "Sensor"

Map Layer Options

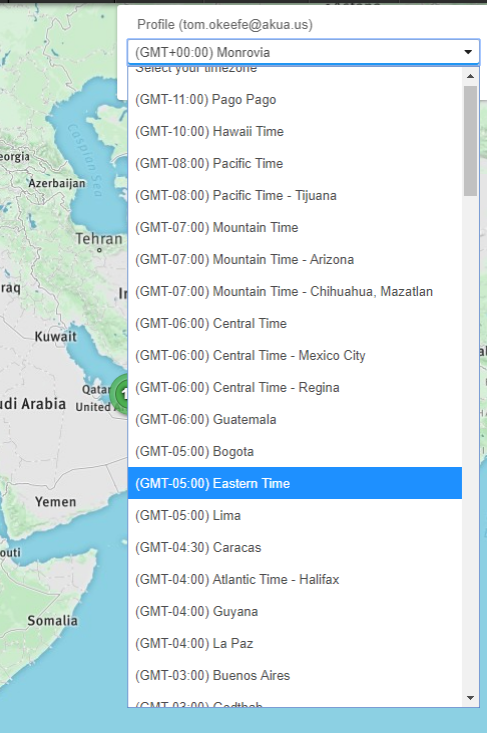
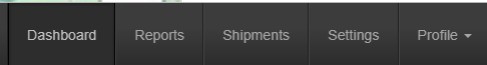
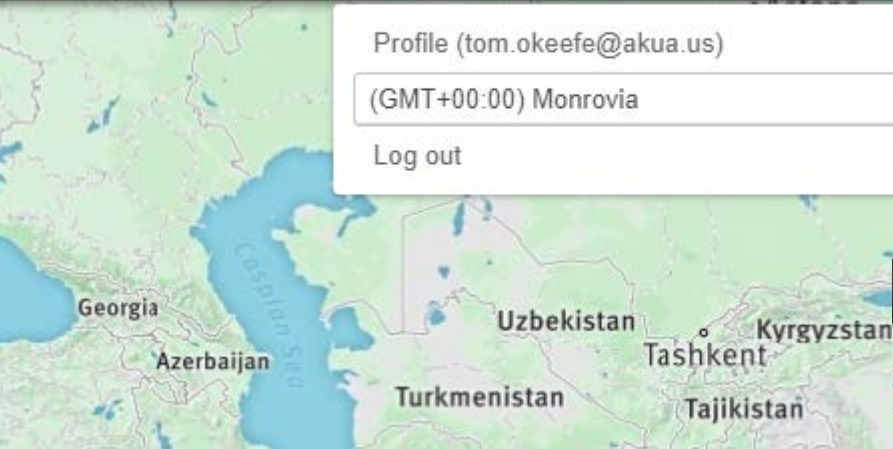
3. Click Location Data Points for more information



Change Time Zone



1. Click "Profile" then the drop down menu.



2. Select time zone from drop down menu





AKUA
SECURE LOGISTICS